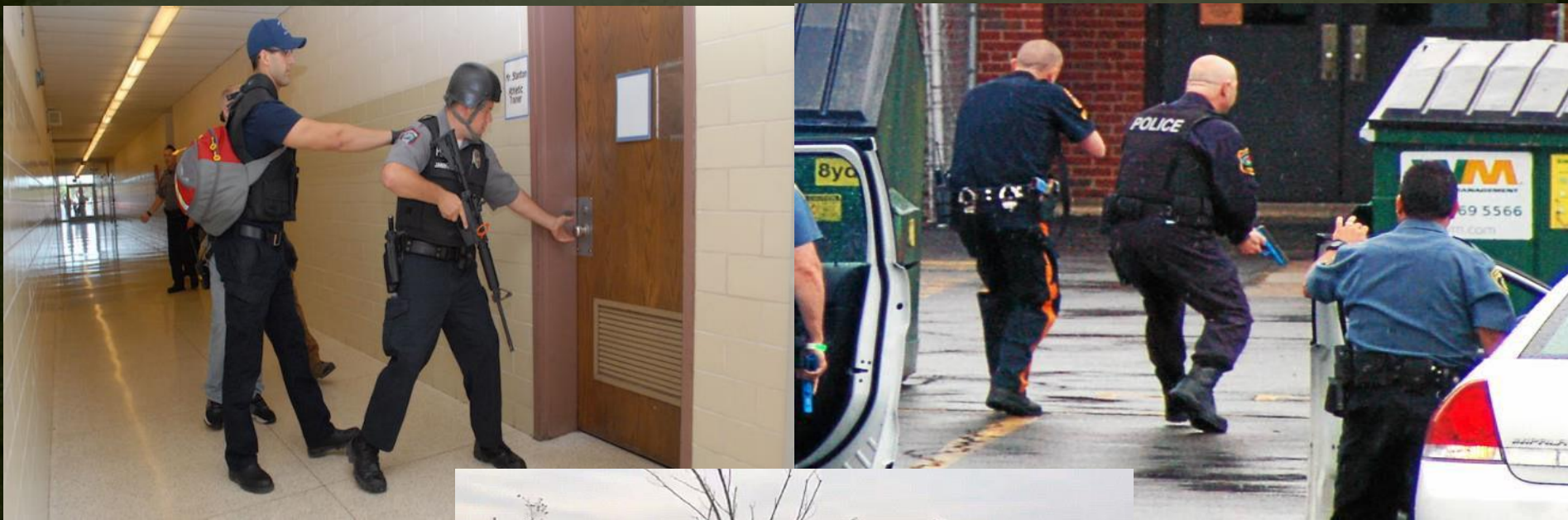


HAVOC ON CAMPUS

North Idaho College Tabletop Exercise



Introductions



Agenda

- Background
- Purpose, scope & objectives
- Participants roles & responsibilities
- Exercise structure
- Exercise rules
- Assumptions & artificialities
- Exercise start

Administrative

- ◆ Emergency Procedures
- ◆ Phones, Pagers, Radios
- ◆ Rest Rooms
- ◆ Refreshments
- ◆ Breaks
- ◆ Participant Feedback Form & Hotwash



Background



Purpose

- To provide participants with an opportunity to evaluate current response concepts, plans, and capabilities for a response to an Active Shooter incident at North Idaho College.
- Focus on campus and local emergency responder command and control coordination, critical decisions, notifications, and integration of assets necessary to save lives and protect public safety.
- Evaluate public information strategies that are critical to the overall response effort.

Scope

- This exercise emphasizes the role of NIC Staff and First Responders in response to an Active Shooter incident.
- Processes and decision-making are more important than minute details.

Exercise Objectives

1. **Planning** - Assess the adequacy of existing local, community-wide and agency specific plans to respond to an armed intruder at North Idaho College. Identify shortfalls in resources, limits in capabilities, and conflicts in planning.
2. **Operational Coordination** - Examine the interface and understanding among local agencies, including the college, in the conduct of incident management activities. Identify needed positions and staffing for the incident command structure and determine how the interface with the college's command structure will occur.

Exercise Objectives

3. **Public Information & Warning/ Operational Communications** - Discuss options to provide timely information to the population and assist in minimizing chaos, to include identifying needed plans and staffing. Review plans to preclude dissemination of conflicting data and assess how various participating agencies will collaborate with their Crisis Communications Teams.

4. **Mass Care Services** - Assess the Evacuation and Shelter in Place policy and procedures for adequacy and appropriateness.

Exercise Objectives

- 5. **Recovery** - Assess the adequacy of North Idaho College's (NIC's) recovery and Continuity of Operations Plan (COOP).

Roles



Players

Organized by
functional area

One main
spokesperson for
each functional area



Facilitators

Moderate the
flow of
discussion



Observers

Can be used as
a resource by
Players

Exercise Structure

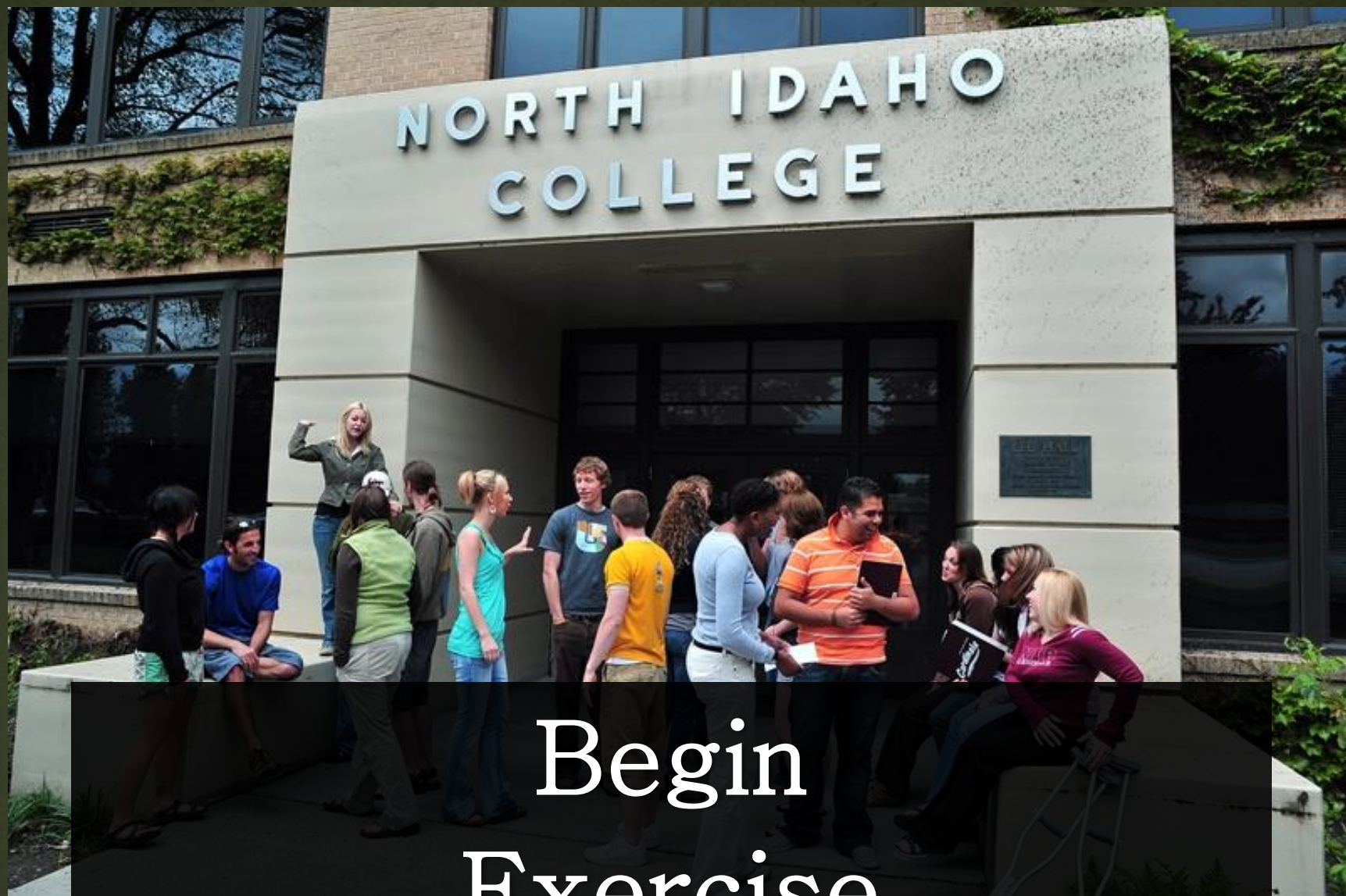
- Module 1: Incident Notification
- Module 2: Initial Response
- Module 3: Ongoing Operations
- Module 4: Recovery

Assumptions and Artificialities



- ◆ The scenario is plausible; events occur as they are presented
- ◆ No “hidden agenda” or trick questions
- ◆ All participants receive information at the same time

Fight the problems, not the scenario



Begin Exercise



Module 1 – Incident Notification

9:52 am – It is between classes and there is a high volume of pedestrian traffic on the NIC Campus. All in all, it seems to be a typical day on campus.



All in all, it seems to be a fairly typical day on campus.



Module 1 – Incident Notification

- 9:54 am – A Ford Expedition is seen driving out of control entering campus on River Avenue heading west. The vehicle proceeds south on College Drive at a high rate of speed (approximately 50 mph). A call was received via a Security phone reporting a reckless driver southbound on College Drive.
- Suddenly, the vehicle jumps the curb, drives onto the sidewalk, in front of Christianson Gymnasium, and begins swerving into groups of people who are walking on the sidewalk. Several people are struck by the vehicle.

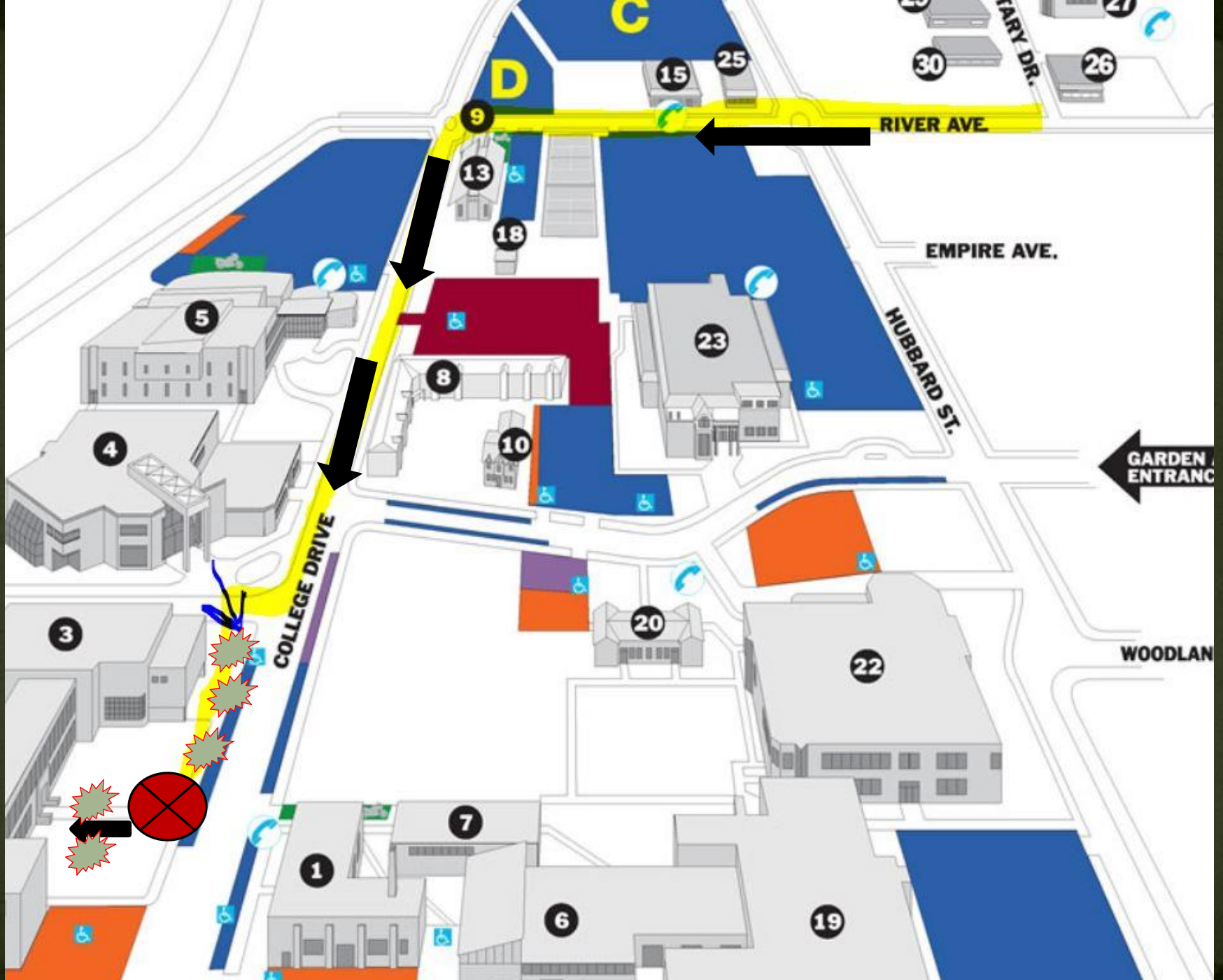


Module 1 - Incident Notification

- **9:55 am** - The vehicle comes to an abrupt stop as it collides with a tree in front of Lee Kildow Hall. Several bystanders begin to call 911 to report a vehicle accident. Students and employees rush out of Lee Kildow Hall in an attempt to provide aid to those who were struck by the vehicle.

Shortly after crashing the vehicle, one male exits the driver's side door brandishing a gun and shoots at students who are exiting the main entrance of Lee Kildow Hall, striking two of them. He then proceeds to enter the building through that same entrance. Several reports are made to 911 dispatchers of gunshots in the area of Lee Kildow Hall.





Module 1 – Incident Notification

9:57 am- Stunned students near the scene scatter in all directions. Most people instinctively run in the opposite direction from where the suspect is heading and end up in the Student Union Building. People scream out for everyone to run because there is a gunman on the loose who just killed several bystanders.



Module 1 – Incident Notification

10:00 am - Students by the dozens instinctively text and call family and friends. Within a minute of the shooting, 911 receives 18 calls on the incident, reports range from a wounded instructor and a loose gunman to multiple dead bodies and a crazed man with an assault rifle. The same types of information are being texted to the college's Twitter Feed, "@northidaho." The most disturbing report is a photograph of injured bodies posted on the NIC Facebook page.



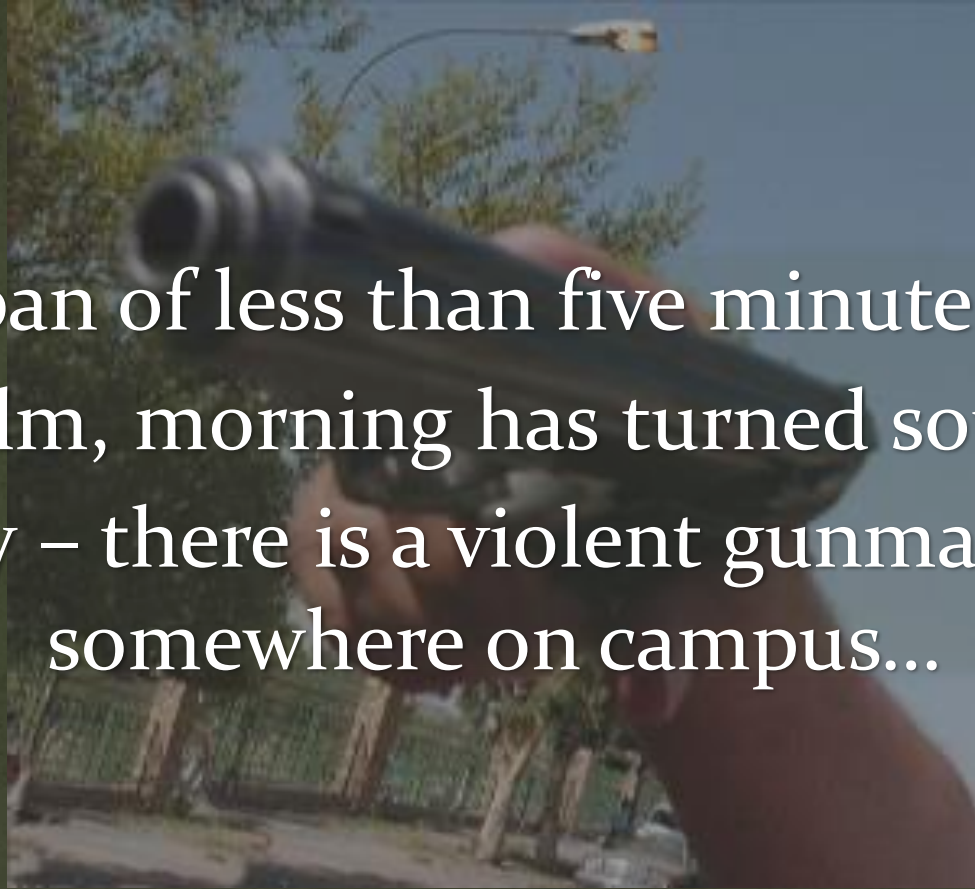


“Guy With A
Gun.
RUN!!!!”

“He’s Killing
People!!”

Module 1 - Incident Notification

In a span of less than five minutes time, the calm, morning has turned south in a hurry – there is a violent gunman loose somewhere on campus...



Module 1 - Questions

- What are the first actions of the NIC staff?
- What are the first actions of NIC Security Staff?
- What are the first actions of the NIC SRO?

Module 1 - Questions



Response Agencies

- Which agencies does Kootenai County dispatch?
- What are your protocols for dispatching in this type of event?
- How many and what type of resources will be available?
- Generally, what is the response time window for your agency?
- What will be your first priorities upon arrival?



Module 2 - Initial Response

- **10:03 am** - The North Idaho College School Resource Officer is the first on-scene law enforcement responder. He is met by a NIC Security Officer. The Security Officer reports the suspect was dressed in long pants, a red T-Shirt, and he has average length brownish hair. The suspect was last seen entering the main entrance to Lee Kildow Hall with a handgun. Dispatch reports several calls stating a shooter was last seen entering Lee Kildow Hall and multiple reports that there may be multiple gunman.

Module 2 – Questions

Law Enforcement

- What role will Security Officers have with regards to the law enforcement response? How will they communicate?
- What procedures will law enforcement use to search for the suspect?
- How will responders communicate with each other? Will a specific channel be utilized?

Module 2 – Questions

Fire/ EMS

- What is Fire/EMS protocol for this type of incident?
- Where would you initially stage units for this incident?

Module 2 – Questions

NIC

- Is there a campus plan(s) in place that would be activated?
- How will NIC Students, Staff and Visitors be notified of the situation?
- What will they be directed to do?
- What are your concerns and priorities for campus students, staff and visitors at this point?

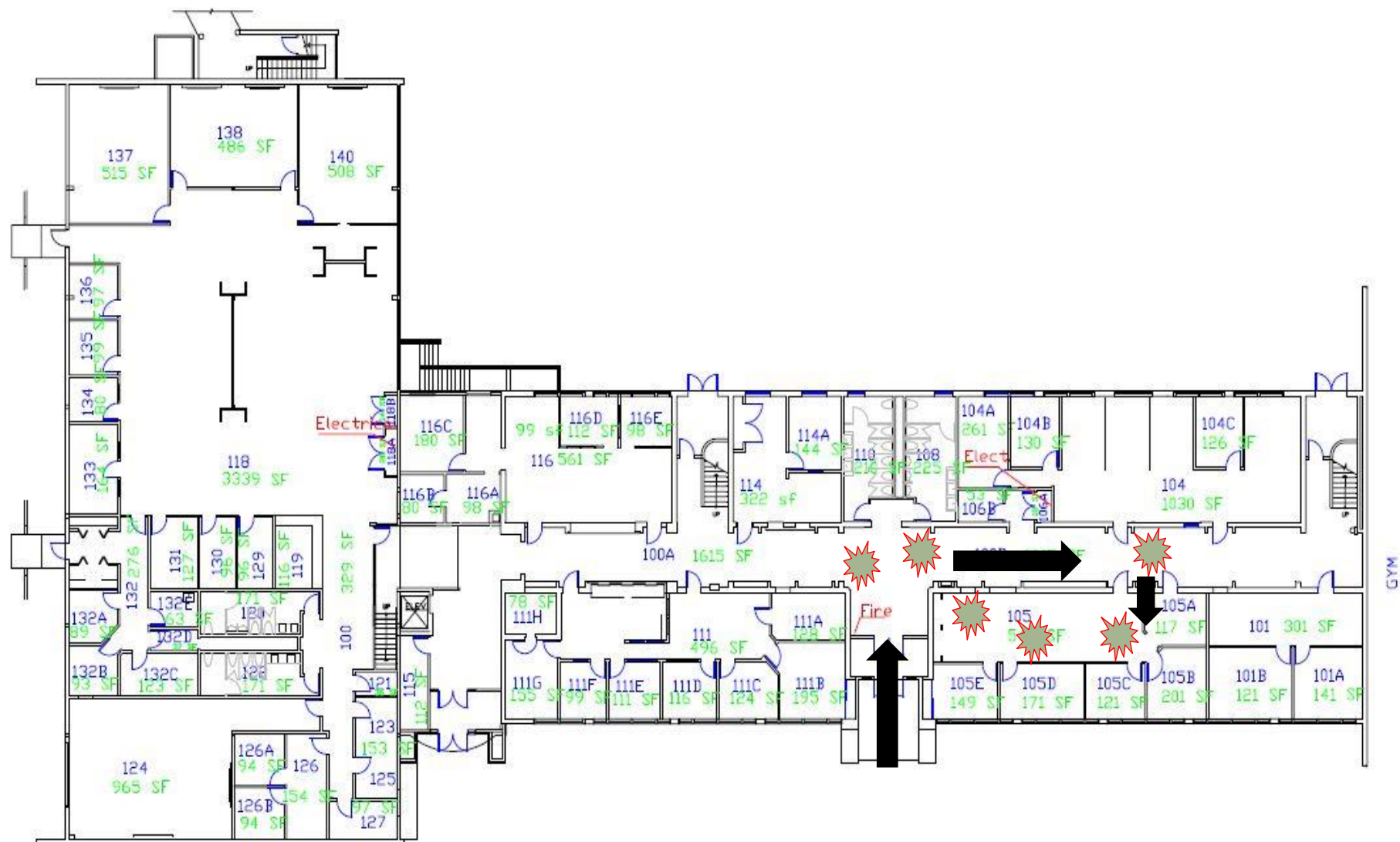
Module 3 – Ongoing Operations



Module 3 - Ongoing Operations

10:04 am - NIC's SRO enters Lee Kildow Hall and upon entering, he hears several gunshots coming from the north end of the hall, near the Admissions Office. As he approaches the Admissions Office, he hears one more gunshot. There are three people laying on the floor in the hallway and appear to be injured. Several employees run out of the office screaming that people have been shot and the gunman has killed himself. The SRO has entered the room and reports that a male fitting the suspect's description has what appears to be a self-inflicted fatal gunshot wound. The SRO also reports hearing no other gun fire at this time.





Kildow 465 N. College Dr.  #2 Lee-Kildow Hall (LKH) Lee 471 N. College D

Module 3 - Ongoing Operations

10:07 am - Two Coeur d'Alene Police Officers and one Kootenai County Sheriff's Deputy arrive on scene at Lee Kildow Hall. Fire and Emergency Medical Service (EMS) units are at a staging location.

10:08 am - Several calls are received by Dispatch asking for EMS to help victims located inside and outside of the buildings.

Module 3 - Questions

Law Enforcement

- What kind of Incident Command structure is being put into place by the responders?
- Who is the Incident Commander?
- At this point without an active shooter, what are the priorities of the agencies on scene?
- Based on the information provided at this time, what additional resources would you be requesting and why?
- What is the procedure and processes for evacuating the building and immediate area of the scene and where will they be evacuated to?

Module 3 - Questions

Fire/ EMS

- If requested by the Police Department, what conditions will need to be met in order for you to advance resources to the “warm zone?”
- Which resources will be advancing at this time?

Module 3 - Questions

NIC

- What type of command structure is now in place at the college?
- Who is the college's Incident Commander?
- How will the NIC Incident Command structure interface with the responder incident command structure?
- How will evacuations be handled and how will the information be communicated?

Module 4 - Recovery

11:30 am- Through video surveillance records, law enforcement is able to confirm there was only one shooter. The shooter, Stephen Bennett, has been confirmed deceased as a result of a self-inflicted gunshot wound. Law Enforcement begins to plan out a strategy to ensure the campus is safe.

The investigation phase of the incident is anticipated to take two to three weeks.

There are 19 casualties identified:

Injured: 9 students, 3 employees, 1 visitor.
Deceased: 4 students and 2 employees.

Module 4 - Questions

Response Agencies

- Will the responder Incident Command structure change?
If so, in what way?
- Will additional notifications take place?
- At this point (once casualties have been identified) are there any additional resources needed now?
- If a Mass Casualty Incident (MCI) is declared, what level of response will be declared and what positions/ roles will you need to fill?

Module 4 - Questions

NIC

- Where will the college's Incident Command or Emergency Operation Center (EOC) be located?
- How will NIC be recording the events?
- Given the estimated time of the investigation being two to three weeks, what is the plan for Continuity of Operations?
- What type of services will be provided for NIC Students, Staff, Visitors, etc.? How will these be provided?

Module 4 - Questions

All

- Who will be providing public information?
- How will the media be handled?

Hotwash & Feedback

- What Went Well?
- Improvement Opportunities?
- Any Final Thoughts?
- Please Turn In A Participant Feedback Form

